



**ACME TOWNSHIP PARKS & TRAILS MEETING
ACME TOWNSHIP HALL
6042 Acme Road, Williamsburg MI 49690
February 15, 2019 8:30 a.m.**

ROLL CALL:

Committee:	x	Feringa	excused	Heflin	x	Heffner	x	Jenema
	x	Smith	x	Timmins	x	Wentzloff		
Advisory:	x	Kushman						
Staff:	x	Winter	x	Donn				

- A. **PUBLIC COMMENT:** None
- B. **APPROVAL OF AGENDA: Motion by Feringa to approve the agenda as presented, seconded by Smith. Motion carries.**
- C. **INQUIRY AS TO CONFLICTS OF INTEREST:** None
- D. **CORRESPONDENCE:** None
- E. **ACTION:**
 - 1. **Approve Draft Parks & Trails Minutes 12.21.18. Motion by Heffner to approve the minutes from 12.21.18, seconded by Feringa. Motion carries.**
- F. **OLD BUSINESS:**
 - 1. **Trail Updates**
 - a. **TVC 2 CHX** – Winter informed there is a Traverse City - Charlevoix Trail Open House at the Williamsburg Event Center on Wednesday, February 27, from 5:30-7:30 pm.

Kushman stated at the January 22 meeting with adjacent land owners they discussed proposed routes between Acme and Elk Rapids. Around 600 invites were mailed to land owners to notify them of the meeting. They held a morning and evening meeting with an estimate of 60 people combined attended. The purpose was to give the land owners an update. In June an engineering assessment of proposed routes between Elk Rapids to Acme was done and an outreach to land owners was held. The public open house was in Elk Rapids with the local agencies group and Shareholders, compiling feedback to determine the the best placement of the route. The engineering assessment was completed by taking an inventory of the wetlands, growers, and several other points. Kushman distributed maps showing the various routes with a breakdown of opportunities, constraints, and summary of public input. Based on the overall summary benefits, the West side of US-31 looks like the best route with access to several natural areas, commercial properties and the right of way is consistently wider. At the February 27 meeting all the up to date feedback and engineering assessment will be presented indicating the West side of U.S 31 looks to be the beneficial route. Steps to take after the public open house will be to go back to the Stakeholders Advisory group and road commission with any concerns. The goal is by spring or early summer to move forward on a preliminary route and costs. They are also looking for the Traverse City-Charlevoix trail to move from preliminary engineer design to final. The selection process for a firm to handle the project will be based on qualifications. With a project this size they want to select the best firm to handle it. Nine different firms have sent their information and an evaluation analysis will be done to narrow down the choices to

three or four. An interview will be held with each and once a firm has been selected, negotiations of costs will be discussed.

b. Acme Connector Trail

i. Engineering Update – Winter informed the township board approved to have Beckett & Raeder handle the connector trail. He had the first meeting with them to start the process, but due to the weather they have not been able to walk the proposed trail. Winter will be meeting with them today to walk it and then have them do a draw up of the project. He said there will be a meeting to go over the first Phase to include the Planning Commission, Township Board and Parks & Trails committee.

ii. Funding Opportunities Discussion – Winter stated they have the grants to start but need a plan to move forward on construction. He met with Julie from TC- Charlevoix Trail and she suggested to apply for DNR Trust Fund Grant that needs the application sent in by April 1. She knows of a grant writer who is willing to put together the application and will be paid for by the Traverse City-Charlevoix Trail with no cost to the township. The intent is to start the Acme connector trail in the spring.

2. Playground Equipment

a. Selection and Approval

Jenema informed the playground equipment has been finalized and the board approved to move forward. Aukerman is getting estimates for the prep work to do the surface area.

b. Community Build Day

Jenema said at this time there is no date set for the community built to set up the equipment. She should have a better idea by the March meeting. They are planning on having it completed sometime in April, or the first part of May in time for the park's open house on May 18.

3. Park System Signage

Jenema said any capital improvements for the parks needs to be given to her to suggest adding to the Capital Improvement Plan. As it is updated these things including future signs need to be presented to the board to possibly add. The committee discussed the type of signs for Bayside Park, regarding their shape, wording and adding the Acme logo.

4. Art In The Park

Winter said based on the community support in the survey, the consensus was to have art in the park. Decisions need to be made on what type of art and how to implement the project. Smith will do some research on what other communities have done to bring to the next meeting.

Heffner went to Glen Arbor Park to look at the swings as an option for the adopted swing for the park. He showed a photo with pricing on the one he saw. He questioned the freight costs which were high and is waiting for them to get back with him.

5. Bayside Park Dedication Ceremony

Winter informed it was decided due to the amount of work involved and lack of funds to not have a maker's fair, or food vendors at the Bayside Park open house. There will be a rental tent and portable sound system for announcements. It was discussed to have something simple like cookies and coffee and if possible, having it donated.

G. NEW BUSINESS:

1. CIP Recommendations

Winter asked for suggestions of improvements to consider being added to the CIP. They can be

DRAFT UNAPPROVED

large or small projects and do not necessarily have to be for the parks. He had a resident suggest having a dog park in the township. The committee discussed possible areas and the maintenance that may be involve. Jenema said she will make copies of the CIP to bring to the next month's meeting to discuss for any modifications.

H. PUBLIC COMMENT

Tom Hurshman, 4625 Rainbow Court, wanted to know how the township lets people know of events like the community-built day.

Jenema let him know information is placed on the township website and a newsletter is included when the tax bills are sent. At this time, they do not have an email list system set up.

ADJOURN: Motion by Jenema to adjourn, seconded by Timmins. Motion carries, meeting adjourned at 10:10 am



ACME TOWNSHIP PARKS & TRAILS MEETING
ACME TOWNSHIP HALL
6042 Acme Road, Williamsburg MI 49690
February 15, 2019 8:30 a.m.

ROLL CALL:

Committee:

	Feringa		Heflin		Heffner		Jenema
	Smith		Timmins		Wentzloff		
	Kushman		Klingelsmith				
	Winter						

Advisory:

Staff:

A. PUBLIC COMMENT:

B. APPROVAL OF AGENDA:

C. INQUIRY AS TO CONFLICTS OF INTEREST:

D. CORRESPONDENCE:

E. ACTION:

1. Approve Draft Parks & Trails Minutes 12.21.18

F. OLD BUSINESS:

1. Trail Updates
 - a. TVC 2 CHX
 - b. Acme Connector Trail
 - i. Engineering Update
 - ii. Funding Opportunities Discussion
2. Playground Equipment
 - a. Selection and Approval
 - b. Community Build Day
3. Park System Signage
4. Art In The Park
5. Bayside Park Dedication Ceremony

G. NEW BUSINESS:

1. CIP Recommendations

H. PUBLIC COMMENT

ADJOURN:

TRAVERSE CITY ↔ CHARLEVOIX
-----T-R-A-I-L-----
GET CONNECTED

Acme to Elk Rapids Public Open House

Wednesday, February 27

5:30 pm - 7:30 pm

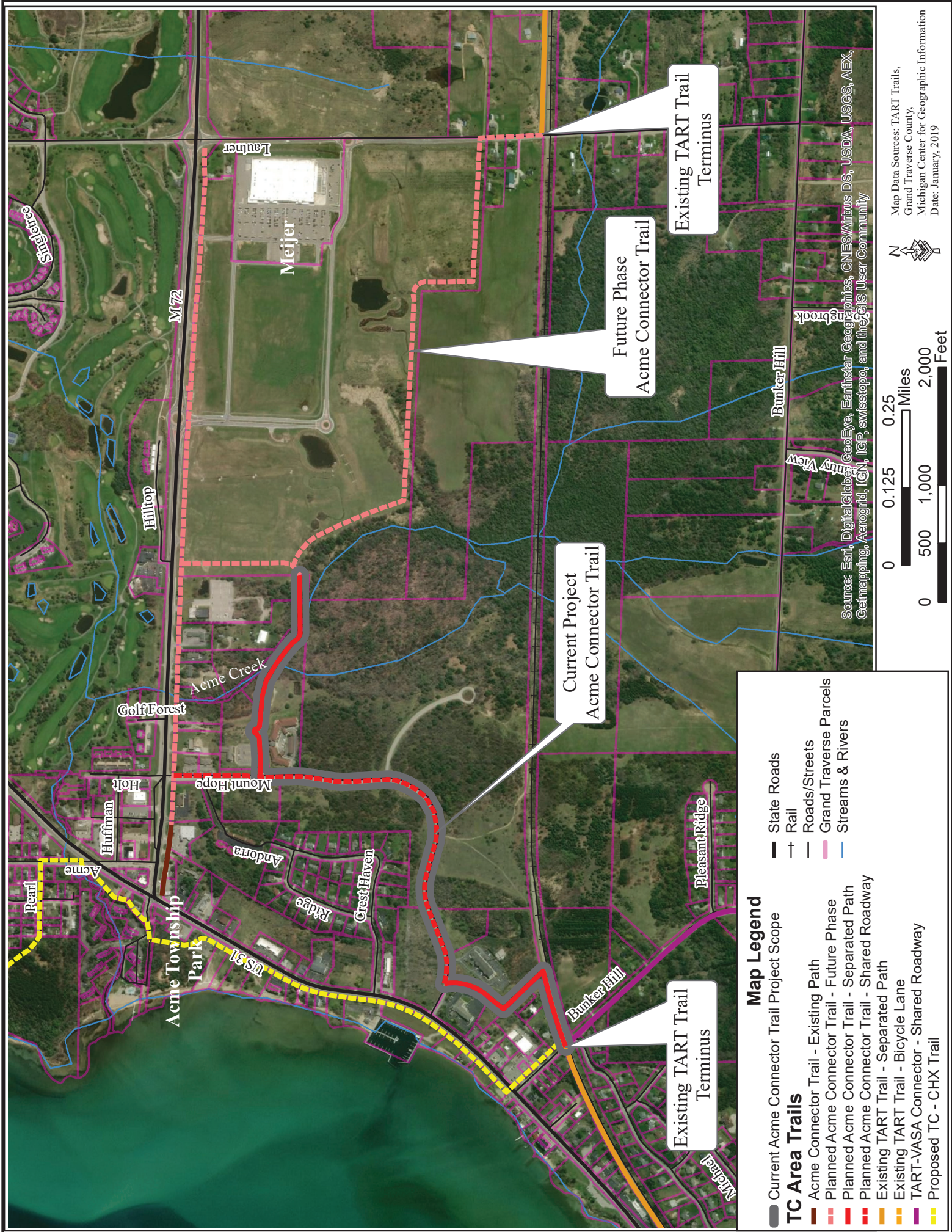


Design plans for the section of trail between Acme and Elk Rapids are underway and we want to hear from you. A public open house will be held on Wednesday, February 27 from 5:30 - 7:30pm at the Williamsburg Event Center, 4230 M-72, Williamsburg, MI, 49690.

Please join project leaders for a short presentation on the design plans thus far and review the proposed routes alternatives. Participants will be asked to share opportunities, constraints, and offer feedback and input into the planning process. For those who cannot attend, information will be provided on-line including a public comment form which will be shared with project partners. This planning process is part of the larger Traverse City ↔ Charlevoix Trail project. Once completed this trail will create a 325-mile network of non-motorized trails in northern Michigan.

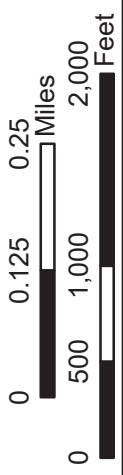
Stay updated with the project at
<http://www.traversecitytocharlevoixtrail.org/>





Map Legend

- Current Acme Connector Trail Project Scope
- TC Area Trails**
 - Acme Connector Trail - Existing Path
 - Planned Acme Connector Trail - Future Phase
 - Planned Acme Connector Trail - Separated Path
 - Planned Acme Connector Trail - Shared Roadway
 - Existing TART Trail - Separated Path
 - Existing TART Trail - Bicycle Lane
 - TART-VASA Connector - Shared Roadway
 - Proposed TC - CHX Trail
- State Roads
- Rail
- Roads/Streets
- Grand Traverse Parcels
- Streams & Rivers



Map Data Sources: TART Trails,
Grand Traverse County,
Michigan Center for Geographic Information
Date: January, 2019

Source: Esri, DigitalGlobe, GeoEye, Earthstar Geographics, CNES/Airbus DS, USDA, USGS, AEX, Getmapping, Aerogrid, IGN, IGP, swisstopo, and the GIS User Community

Existing TART Trail Terminus

Future Phase Acme Connector Trail

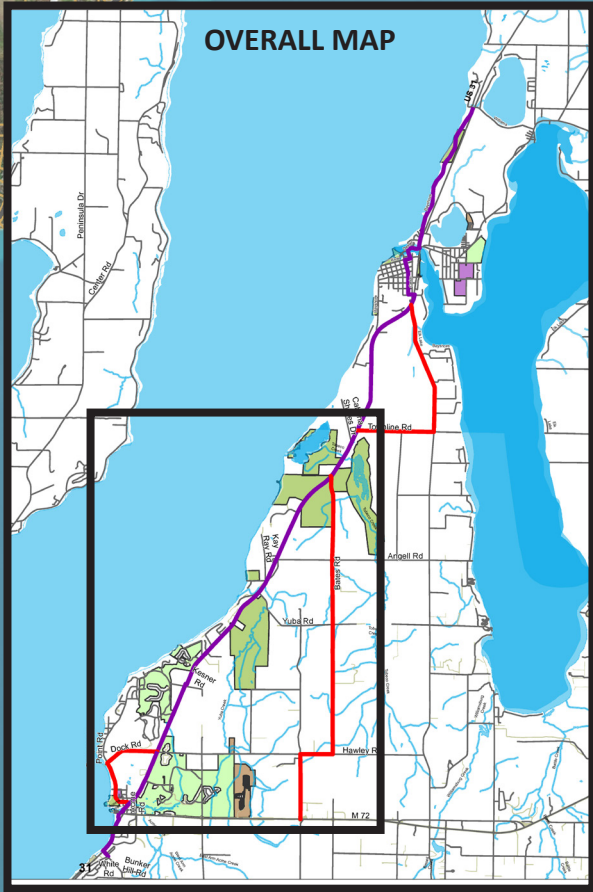
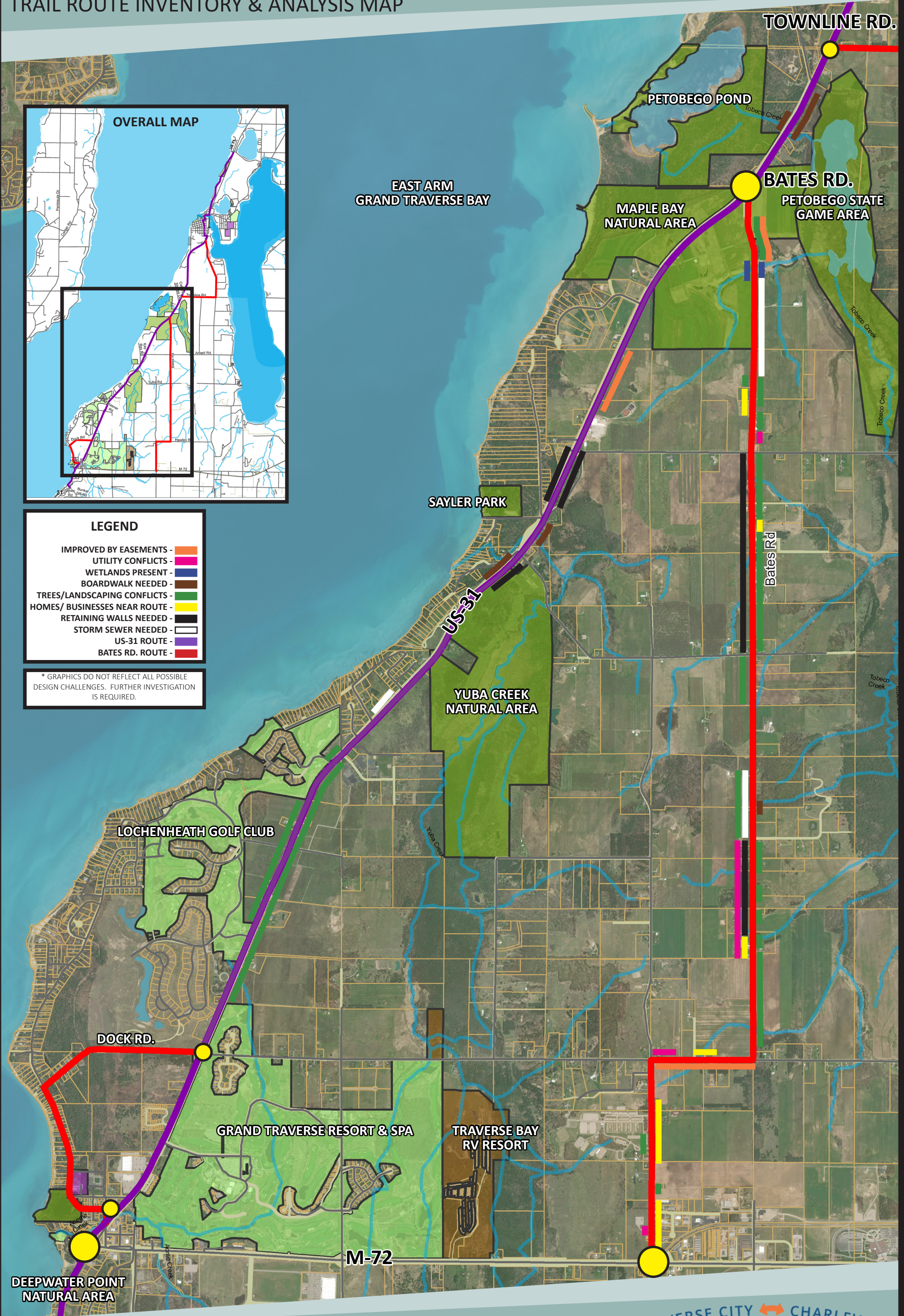
Current Project Acme Connector Trail

Existing TART Trail Terminus

ACME TO ELK RAPIDS TRAIL

TRAIL ROUTE INVENTORY & ANALYSIS MAP

ACME TO MAPLE BAY



LEGEND	
IMPROVED BY EASEMENTS -	Orange
UTILITY CONFLICTS -	Pink
WETLANDS PRESENT -	Blue
BOARDWALK NEEDED -	Brown
TREES/LANDSCAPING CONFLICTS -	Green
HOMES/BUSINESSES NEAR ROUTE -	Yellow
RETAINING WALLS NEEDED -	Black
STORM SEWER NEEDED -	White
US-31 ROUTE -	Purple
BATES RD. ROUTE -	Red

* GRAPHICS DO NOT REFLECT ALL POSSIBLE DESIGN CHALLENGES. FURTHER INVESTIGATION IS REQUIRED.

TOWNLINER RD.

PETOBEGO POND

EAST ARM GRAND TRAVERSE BAY

MAPLE BAY NATURAL AREA

BATES RD.

PETOBEGO STATE GAME AREA

SAYLER PARK

US-31

YUBA CREEK NATURAL AREA

LOCHENHEATH GOLF CLUB

DOCK RD.

GRAND TRAVERSE RESORT & SPA

TRAVERSE BAY RV RESORT

M-72

DEEPWATER POINT NATURAL AREA

West

Opportunities

- Wide ROW
- Less Adjacent Agriculture
- Access to several natural areas, including Deepwater Point, Saylor Park, Maple Bay Natural Area, and Petobego Pond (without having to cross US-31)
- Access to commercial properties

US-31 Route

Constraints

- Approx. 1,400' of boardwalk needed
- 8,500 sq. ft. of retaining wall needed
- Orchard proximity on south end/west side of US-31
- Orchard product staging area
- High adjacent road traffic/noise
- Numerous driveway crossings
- Landscaping would need to be relocated/replaced
- No access to Grand Traverse Resort or Yuba Creek Natural Area

Summary of Public Input

- Road noise may be a concern
- Crossing 31 is a major safety concern at any location due to traffic volume/ speed and sight lines
- West side has easier access to parks and open space
- Safety and separation from cars important
- Agricultural concern with trespassing and loss of crop from users and from construction
- Loss of land and rows of fruit trees near the road
- Use of pesticides near bike path is a concern
- West side has larger number of driveways with cars and trucks constantly turning in and out
- Views of the Grand Traverse Bay from 31
- West side is close to more residential housing and parks/ open space
- Access to farm stands, Greek Orthodox Church, and Lochenheath
- Viability and accessibility to business

East

Opportunities

- Access to Grand Traverse Resort, East Maple Bay Natural Area, and Yuba Creek Natural Area
- Few road and driveway crossings

Constraints

- US-31 crossings
- Orchard/ shoreline fruit proximity
- Orchard related equipment in operation and entering/exiting
- Not on same side of US-31 as Saylor Park, West Maple Bay Park, and Petobego Pond
- Easements required or construct expanded shoulder/ non separated path
- 900' of boardwalk needed
- 5,500 sq ft. of retaining wall needed

West

Opportunities

- Less vehicles/ road noise
- Panoramic countryside views

Bates Rd. Route

Constraints

- Easements required, or construct expanded shoulder/non separated path
- Several sections of retaining wall totaling 5,000sqft.
- Wetlands present
- Requires old tree removal
- Steep terrain- ADA changes
- Areas where power lines in ROW limit trail placement
- Proximity to homes

Summary of Public Input

- Less traffic and wider roads make Bates Rd. The safer option.
- Trespassing on farms is already an issue
- More disruption and physical affects of building the a separated path.
- Bike traffic interrupting farm operations
- County roads do not provide space for separated trail
- Quieter more peaceful route
- Difficulty of obtaining easements
- Fewer connections to parks and natural areas
- Wetlands may be a concern
- Not as direct as the US-31 route
- Connects to existing trail system and Acme
- Scenic views

East

Opportunities

- Less vehicles/ road noise
- Panoramic countryside views

Constraints

- Requires grading easements
- 600' of boardwalk needed
- Sections of storm sewer required
- Requires old tree removal
- Steep terrain- ADA challenges
- Areas where power lines in ROW limit trail placement
- Proximity to homes
- Landscaping would need to be removed

Dock Rd. Route

Opportunities

- Existing connectivity to Deepwater Natural Area and US-31 to the north
- Access to route by nearby residents

Constraints

- Curvy road
- 55 mph road
- Steep terrain- ADA challenges
- Dense residential area

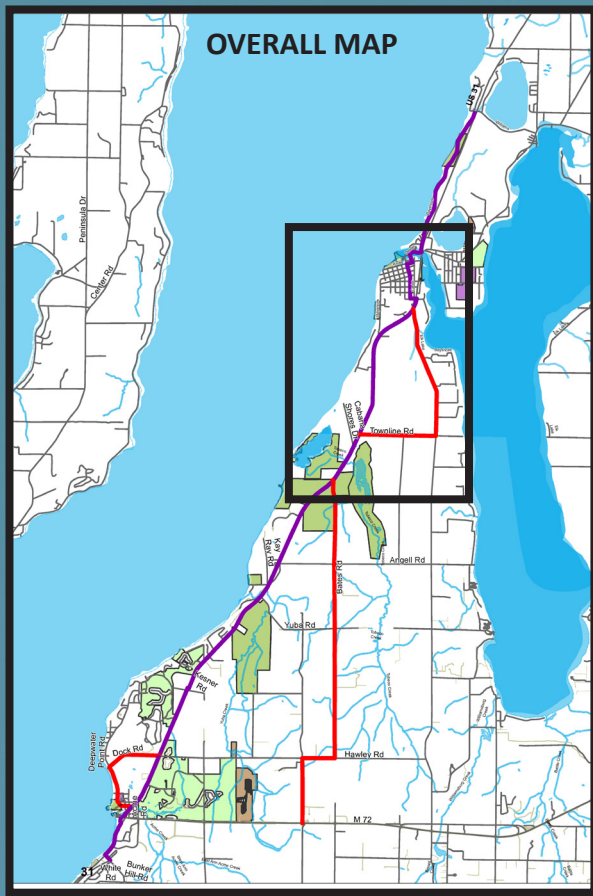
Summary of Public Input

- Conflicts with motor vehicle traffic on a narrow and curvy road
- Biker etiquette necessary
- Speeding/ distracted vehicles
- Steep section
- Scenic views along the water
- Residential access
- Less traffic than US-31

ACME TO ELK RAPIDS TRAIL

TRAIL ROUTE INVENTORY & ANALYSIS MAP

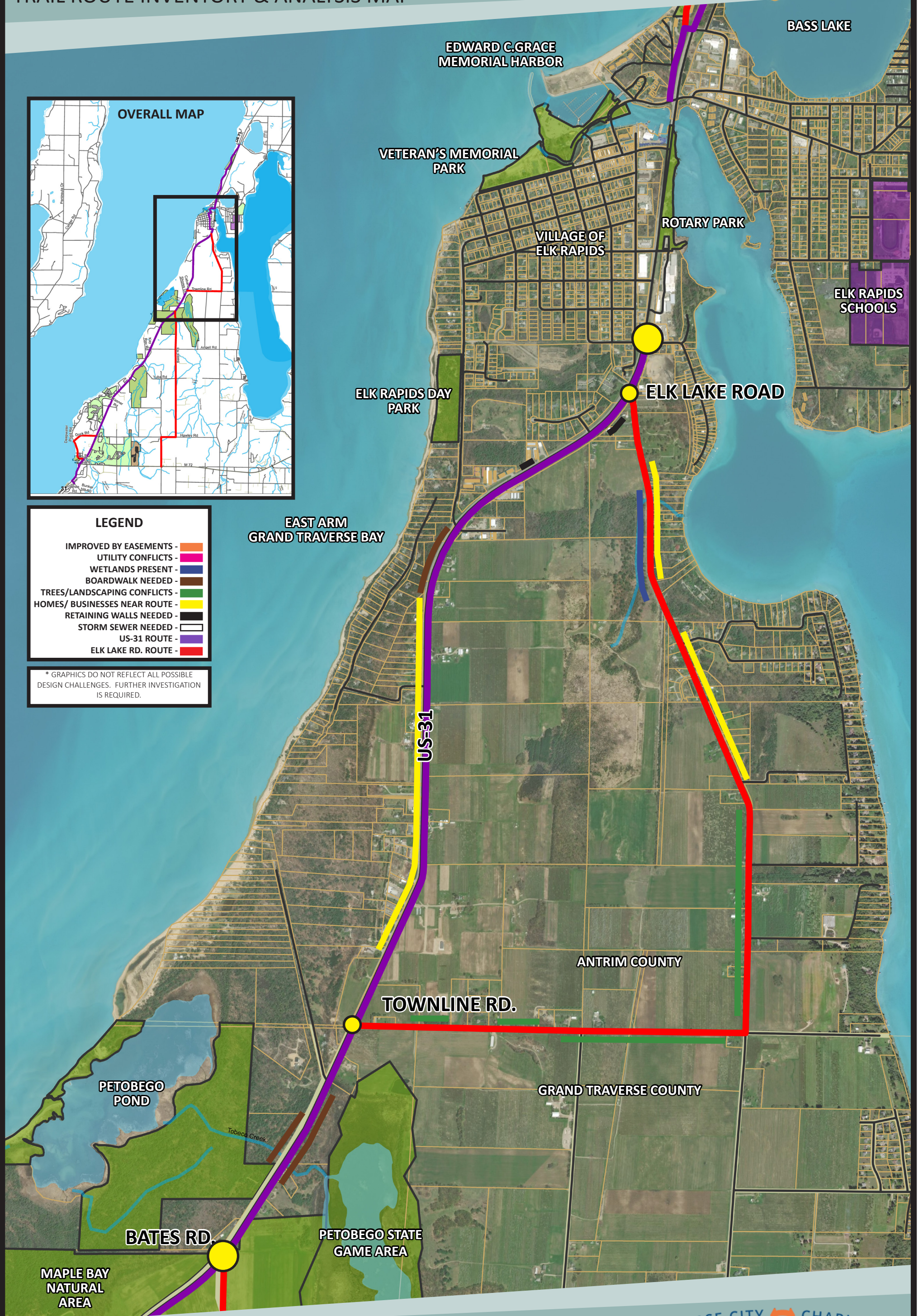
MAPLE BAY TO ELK RAPIDS



LEGEND

- IMPROVED BY EASEMENTS - █
- UTILITY CONFLICTS - █
- WETLANDS PRESENT - █
- BOARDWALK NEEDED - █
- TREES/LANDSCAPING CONFLICTS - █
- HOMES/BUSINESSES NEAR ROUTE - █
- RETAINING WALLS NEEDED - █
- STORM SEWER NEEDED - █
- US-31 ROUTE - █
- ELK LAKE RD. ROUTE - █

* GRAPHICS DO NOT REFLECT ALL POSSIBLE DESIGN CHALLENGES. FURTHER INVESTIGATION IS REQUIRED.



West

Opportunities

- Wide ROW
- Overall less adjacent agriculture
- Access to Petobego State Game Area and Pond
- Access to trail by adjacent residents
- Access to commercial properties
- No US-31 crossing

US-31 Route

Constraints

- 900' of boardwalk along the West side
- 1,000 sq. ft. of retaining wall require
- Frequent/ numerous driveways
- High adjacent road traffic/ noise

Summary of Public Input

- Road noise may be a concern
- Crossing 31 is a major safety concern at any location due to traffic volume/ speed and sight lines
- Use of pesticides near bike path is a concern
- West side has easier access to parks and open space
- Safety and separation from cars important
- Agricultural concern with trespassing and loss of crop from users and from construction
- Loss of land and rows of fruit trees near the road
- West side has larger number of driveways with cars and trucks constantly turning in and out
- Views of the Grand Traverse Bay from 31
- West side is close to more residential housing and parks/ open space
- Connection to Elk Rapids
- Viability and accessibility to business
- More cost effective route

East

Opportunities

- Few road and driveway intersections
- Potential for agribusiness

Constraints

- US-31 crossing needed
- Orchard proximity
- Orchard related equipment in operation and entering/exiting
- Easements required or construct expanded shoulder/ non separated path
- 2,000 sq ft. of retaining wall needed

Elk Lake Rd./Townline Rd. Route

Opportunities

- Panoramic countryside views
- Adjacent residential access
- Less vehicles/ road noise

Constraints

- Wetlands along presents
- Proximity to orchards
- Proximity to homes
- Tree removal would be required
- Easements

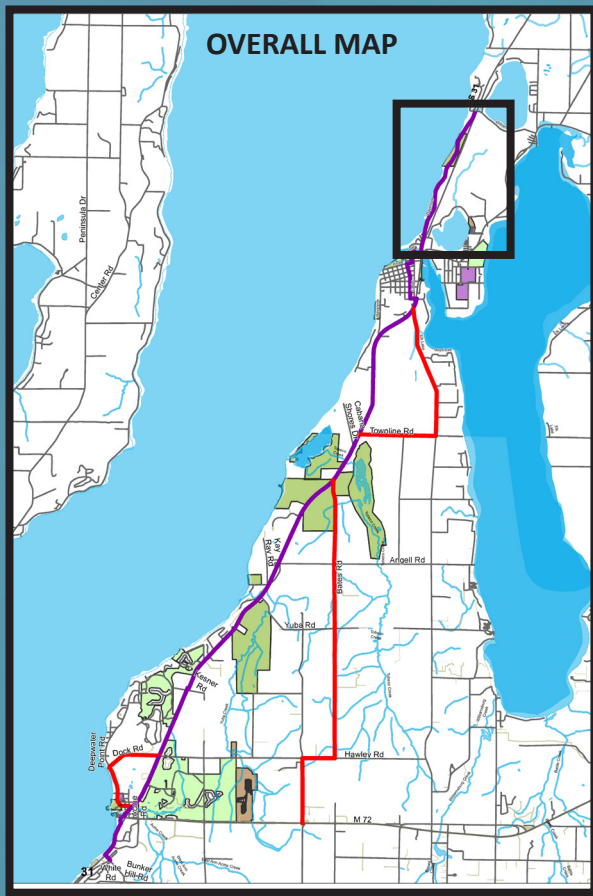
Summary of Public Input

- Less traffic and wider roads make Elk Lake Rd. the safer option
- Trespassing on farms is already an issue
- Loss of land, businesses, and fruit trees
- Bike traffic interrupting farm operations
- Already used by cyclists
- Proximity of residences

ACME TO ELK RAPIDS TRAIL

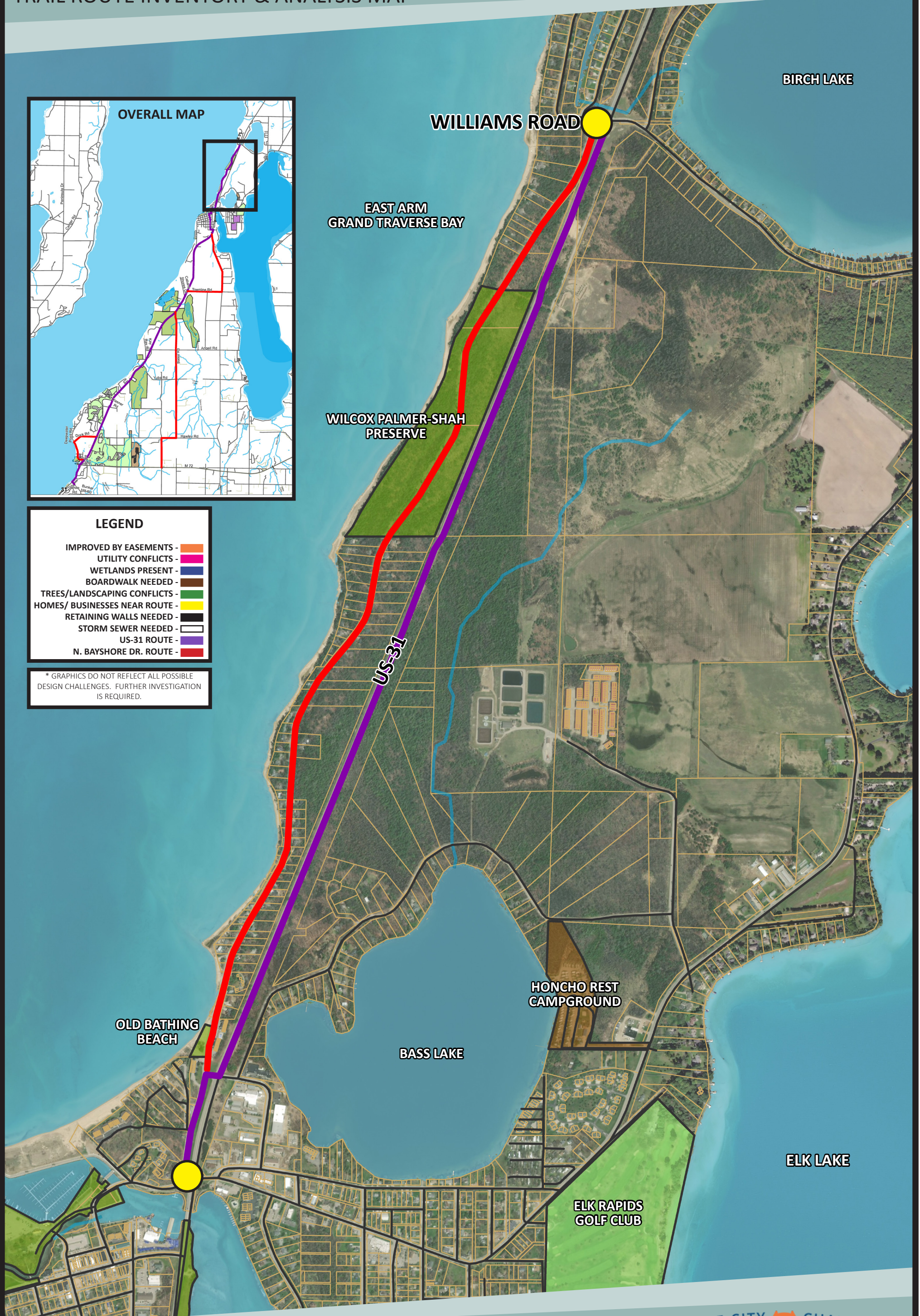
TRAIL ROUTE INVENTORY & ANALYSIS MAP

ELK RAPIDS TO WILLIAMS RD.



LEGEND	
IMPROVED BY EASEMENTS -	Orange line
UTILITY CONFLICTS -	Pink line
WETLANDS PRESENT -	Blue line
BOARDWALK NEEDED -	Brown line
TREES/LANDSCAPING CONFLICTS -	Green line
HOMES/BUSINESSES NEAR ROUTE -	Yellow line
RETAINING WALLS NEEDED -	Black line
STORM SEWER NEEDED -	White line
US-31 ROUTE -	Purple line
N. BAYSHORE DR. ROUTE -	Red line

* GRAPHICS DO NOT REFLECT ALL POSSIBLE DESIGN CHALLENGES. FURTHER INVESTIGATION IS REQUIRED.



West

Opportunities

- Less wetland impact

US-31 Route

Constraints

- Proximity to homes
- Trail would require tree removal and reduce buffer between highway and homes
- Wetlands present
- High adjacent road traffic/ noise
- Narrower ROW

Summary of Public Input

- Proximity to residences on the East side
- Removal or relocation of trees and buffer between highway and residences
- Highway traffic and noise
- Requires costly boardwalk
- Roadside Park is located on East side North of Williams Rd.
- Wide ROW allows for separated trail
- Unknown what side of the road the facility will be north of Williams Rd.
- Limited access highway
- East side preferred over West side by N. Bayshore Residents

East

Opportunities

- Wide ROW
- Distance from development or agriculture

Constraints

- Wetlands present
- High adjacent road traffic/ noise

N. Bayshore Dr. Route

Opportunities

- Low volume vehicle traffic
- Existing connectivity to Village
- Access to Wilcox Palmer Preserve

Constraints

- Separated path or expanded shoulders not possible
- Speed limit of 35 mph
- Areas of limited visibility

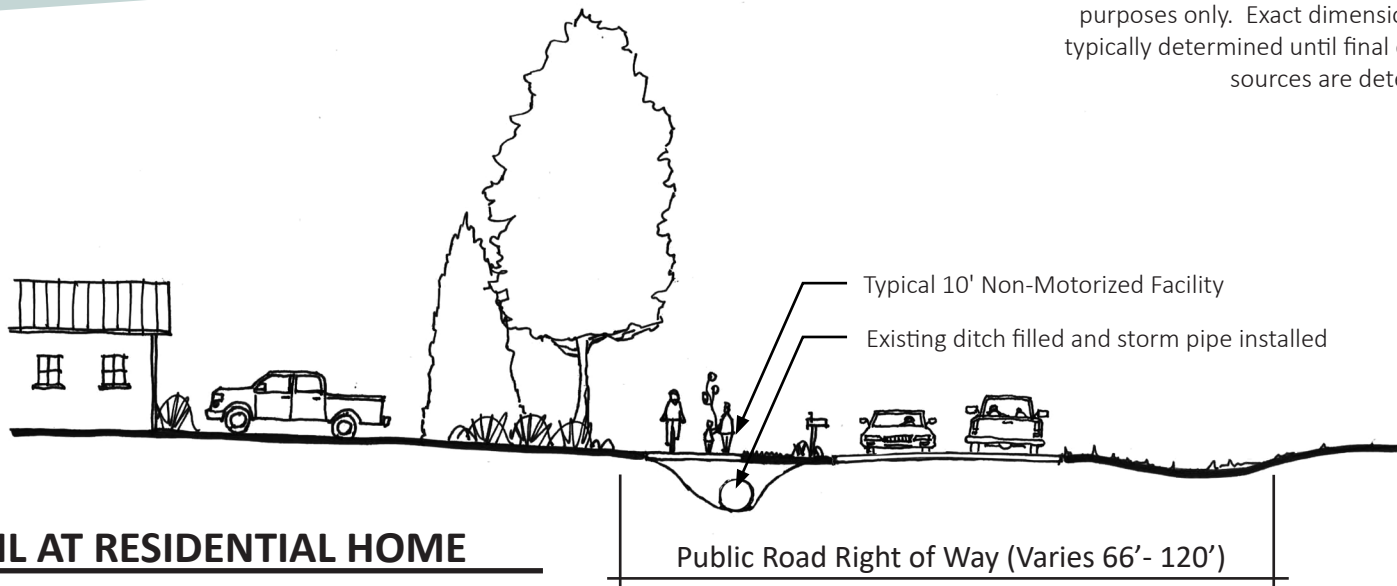
Summary of Public Input

- Concerns of safety with additional users
- Road becomes curvy and narrows
- Residents concerned having trail on their property and too close to homes
- Already used for biking and walking
- Least costly option
- Access to recreation areas
- Biker etiquette is necessary
- Conflicts with motor vehicle traffic

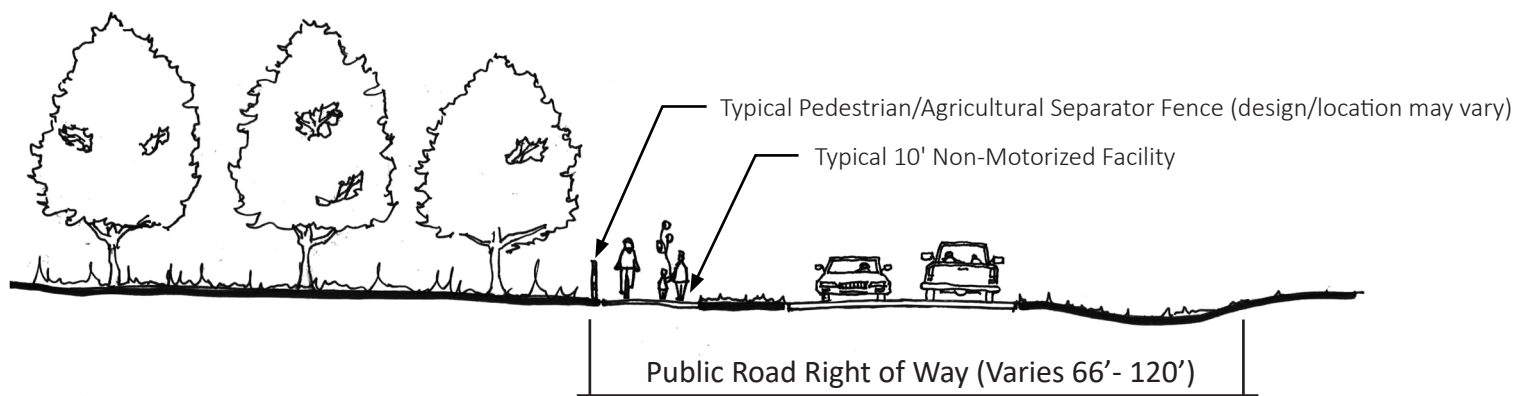
ACME TO ELK RAPIDS TRAIL

CHARACTER SKETCHES

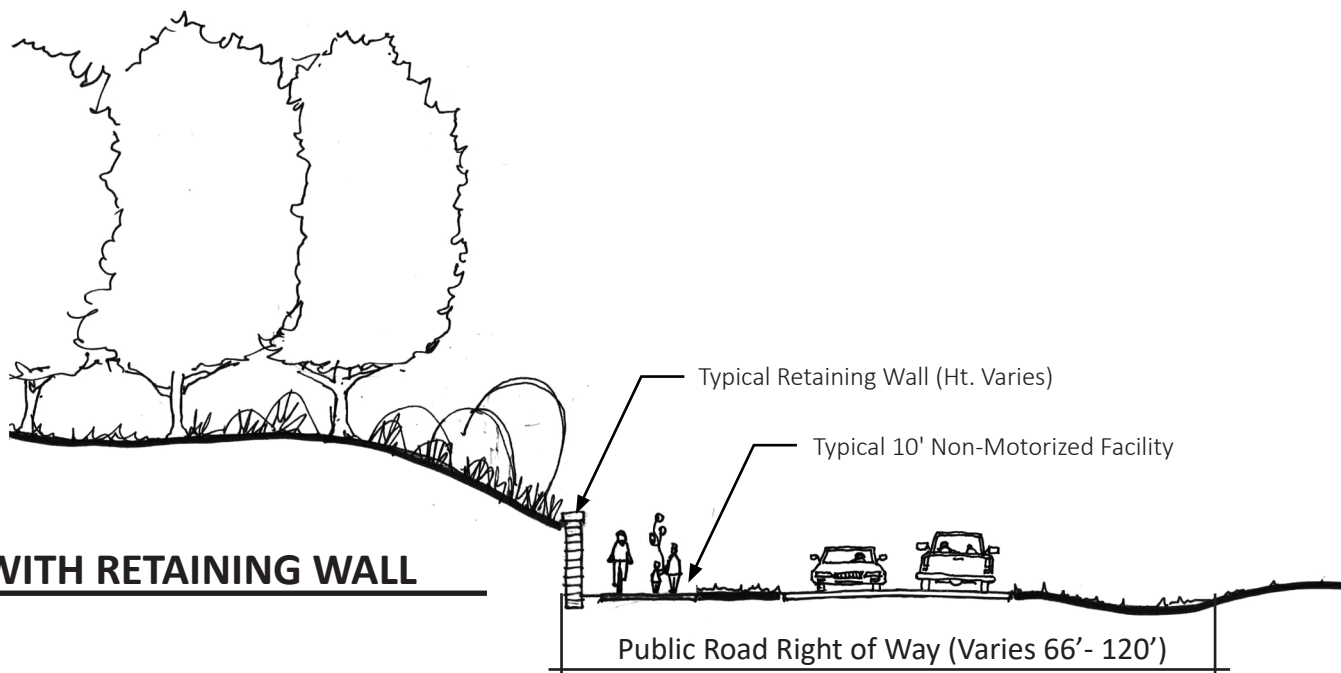
Graphic depictions below are general and for discussion purposes only. Exact dimensions and layouts are not typically determined until final engineering and funding sources are determined.



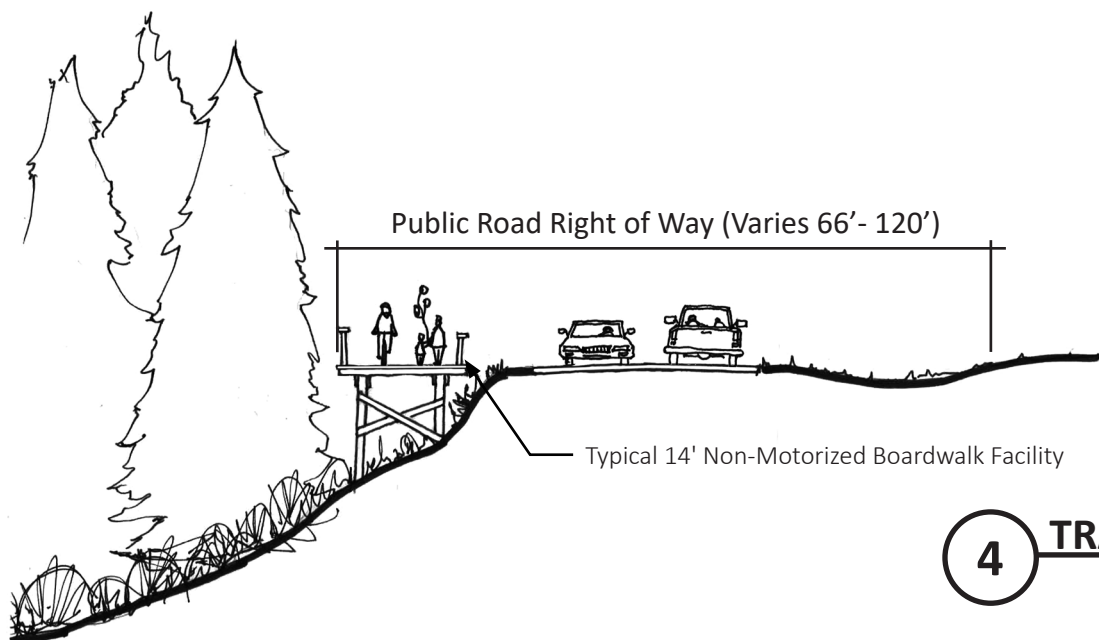
1 TRAIL AT RESIDENTIAL HOME



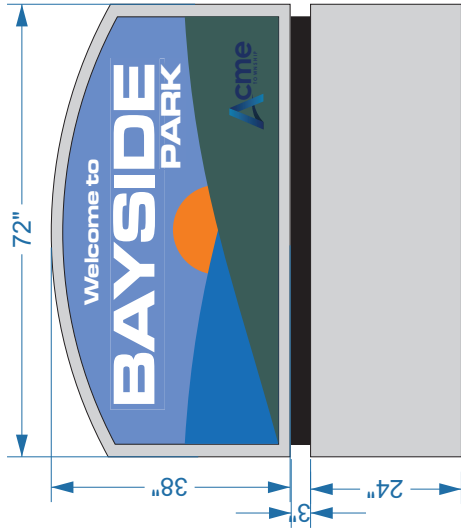
2 TRAIL AT ORCHARD WITH FENCE



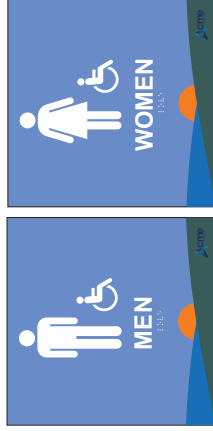
3 TRAIL WITH RETAINING WALL



4 TRAIL ON BOARDWALK



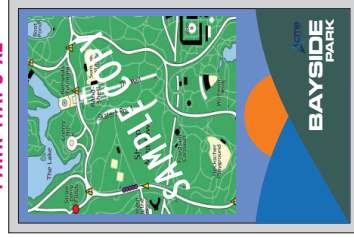
- 1 SINGLE FACE MONUMENT**
 ALUMINUM CABINET WITH REVEAL
 ALUMINUM FACES
 PSA DIGITAL GRAPHIC WITH LAMINATE
 220-10 WHITE VINYL "WELCOME TO"
 3/8" FLAT CUT ACRYLIC LETTERS
 STUD MOUNTED FLUSH
 "BAYSIDE PARK"



- 2 RESTROOM SIGNS**
 12" X 12"
 NTS
 FRAMELESS WALL MOUNTED

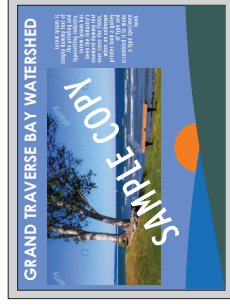


PARK MAPS X2



- 3 24" X 36"
 NTS
 VERTICAL MOUNT
 WITH FRAME
 60" FROM GRADE TO
 CENTER OF SIGN**

OVERLOOK SIGN X1



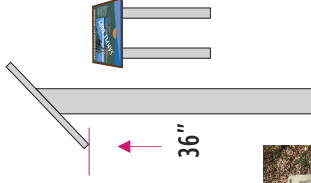
- 4 24" X 36" PEDESTAL MOUNT
 WITH FRAME - 2 POSTS
 NTS**



- 5 FEATURES SIGNS X10**



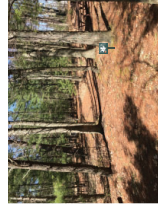
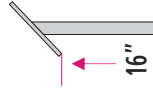
- 18" X 24"
 PEDESTAL MOUNT-
 2 POSTS
 WITH FRAME
 NTS**



- 6 GROUND PLAQUES X15**



- 8" X 6"
 PEDESTAL MOUNTED
 FRAMELESS (BASEPLATE)
 NTS**



NOS. 2-6: .090 FIBERGLASS EMBEDDED DIGITAL GRAPHIC PANELS - ALUMINUM TUBE POSTS \ WALL MOUNT WHERE INDICATED _ ALL POSTS - SKIRTS AND FRAMES PAINTED MAPS POLY 18099 PLATINUM SPARKLE METALLIC



DATE: 5-14-18 ACCOUNT EXECUTIVE: KB
 DRAWING SCALE: NO SCALE GRAPHICS BY: W. BIALIK
 FILENAME: 15521 PARKS LOGO
 FILE LOCATION: AMOR N:\ DESIGN \ACME TOWNSHIP

PANTONE COLOR MATCHING:

PMS: AS SHOWN

3M / PSA FILM MATCHING:

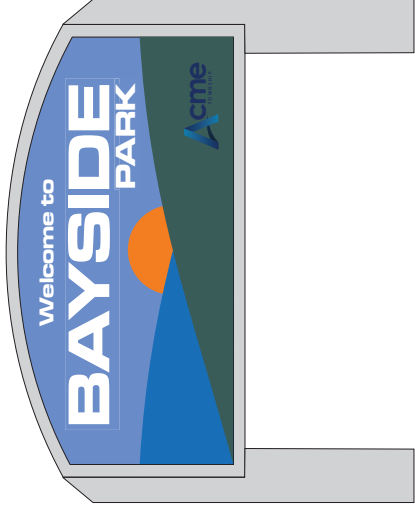
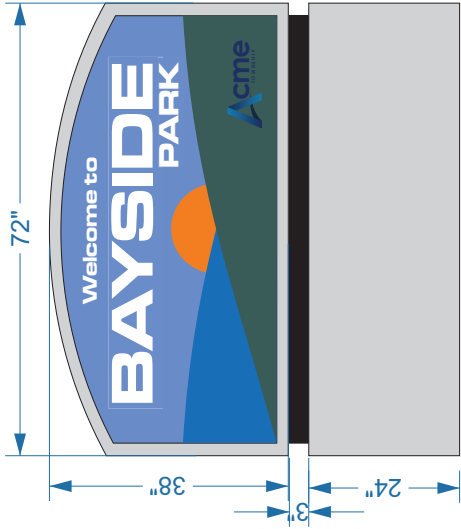
PREMIUM:
 TRANSLUCENT:
 PSA: LAMINATE:

VER
1

APPROVED:

DATE:

AMOR SIGN STUDIOS, INC. reserves the exclusive right to bid on illustrated design. This design/illustration is protected by U.S. Federal Copyright Laws. Reproduction in all or part is STRICTLY FORBIDDEN.



ALL POSTS - SKIRTS AND FRAMES PAINTED MAPS POLY 18099 PLATINUM SPARKLE METALLIC



DATE: 5-14-18 ACCOUNT EXECUTIVE: KB
 DRAWING SCALE: NO SCALE GRAPHICS BY: W. BIALIK
 FILENAME: 15521 PARKS LOGO
 FILE LOCATION: AMOR N:\ DESIGN \ACME TOWNSHIP

PANTONE COLOR MATCHING:
 PMS: AS SHOWN

3M / PSA FILM MATCHING:
 PREMIUM:
 TRANSLUCENT:
 PSA: LAMINATE:

VER
 1

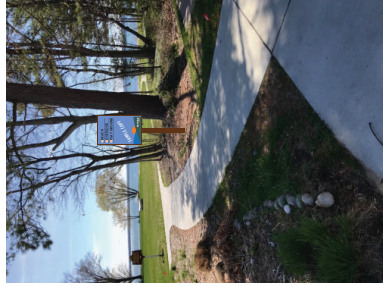
APPROVED:
 DATE:

AMOR SIGN STUDIOS, INC. reserves the exclusive right to bid on illustrated design. This design/illustration is protected by U.S. Federal Copyright Laws. Reproduction in all or part is STRICTLY FORBIDDEN.

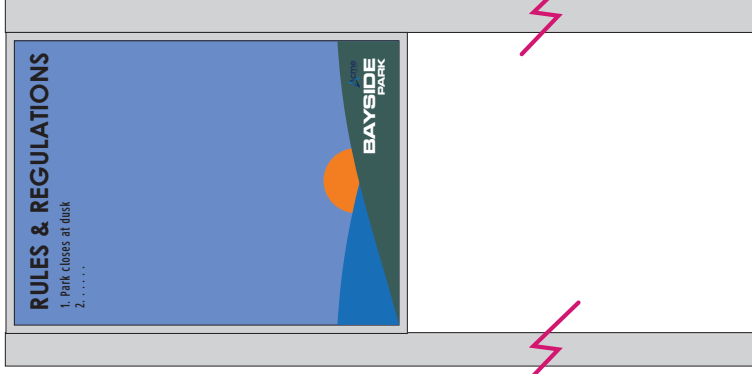
WAYFINDING X7



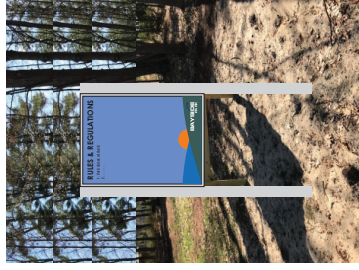
7 24" X 36"
NTS
VERTICAL MOUNT
WITH FRAME
60" FROM GRADE TO
CENTER OF SIGN



PARK RULES X2



8 36" X 48"
NTS
VERTICAL MOUNT
WITH FRAME
60" FROM GRADE TO
CENTER OF SIGN



PARK RULES X10



9 6" X 3"
NTS
BENCH MOUNT
TAMPERPROOF FASTENERS
FRAMELESS



NOS. 7-9: .090 FIBERGLASS EMBEDDED DIGITAL GRAPHIC PANELS _ ALUMINUM TUBE POSTS _ ALL POSTS - SKIRTS AND FRAMES PAINTED MAPS POLY 18099 PLATINUM SPARKLE METALLIC



DATE: 8-8-18 ACCOUNT EXECUTIVE: KB
DRAWING SCALE: NO SCALE GRAPHICS BY: W. BIALIK
FILENAME: 15521 PARKS LOGO
FILE LOCATION: AMOR N:\ DESIGN \ACME TOWNSHIP

PANTONE COLOR MATCHING:
PMS: AS SHOWN

3M / PSA FILM MATCHING:
PREMIUM:
TRANSLUCENT:
PSA: LAMINATE:

VER
1

APPROVED:
DATE:

AMOR SIGN STUDIOS, INC. reserves the exclusive right to bid on illustrated design. This design/illustration is protected by U.S. Federal Copyright Laws. Reproduction in all or part is STRICTLY FORBIDDEN.



**ACME TOWNSHIP PARKS & TRAILS MEETING
ACME TOWNSHIP HALL
6042 Acme Road, Williamsburg MI 49690
December 21, 2018 8:30 a.m.**

ROLL CALL:

Committee:

x	Feringa	x	Heflin	x	Heffner	excused	Jenema
excused	Smith	x	Timmins	x	Wentzloff		
x	Kushman	x	Klingelsmith				
x	Winter	x	Donn				

Advisory:

Staff:

A. PUBLIC COMMENT:

Evert Stewart, 5751 US 1 North, stated there has been a problem with people parking in the Bay Villa Condominiums lot and using their dock. He has concerns with the use of the concrete building and the parking lot at the south end noted in the Phase III plan. He also questioned the plan for a second set of restrooms when there are already bathrooms there.

Brian Kelly voiced his concerns with the park plan construction review. (Submitted written comments to be added to packet)

Public comment closed at 8:50 am

B. APPROVAL OF AGENDA: Motion by Timmins to approve the agenda with addition to D. Correspondence 1. Email sent from Blaine Wittkopp, seconded by Heffner. Motion carries.

C. INQUIRY AS TO CONFLICTS OF INTEREST: None

D. CORRESPONDENCE:

1. **Email sent from Blaine Wittkopp on 2019-2023 Parks and Recreation Plan**

E. ACTION:

1. **Approve Draft Parks & Trails Minutes 11.16.18. Motion by Timmins to approve the minutes from 11.16.18, seconded by Heffner. Motion carries.**
2. **Approve Draft Parks & Trails Minutes 11.26.18. Motion by Heflin to approve the minutes from 11.26.18, seconded by Timmins. Motion carries.**

F. OLD BUSINESS:

1. DRAFT Parks & Recreation Plan 2019-2023

- a. **Review draft plan and public comment-**Winter explained the draft needed to be reviewed and edits given to Carrie Klingelsmith to incorporate in a final draft. Next step will be to send the plan to the Township Board to hold a public hearing at their January 8, 2019 meeting. The committee went over the plan and discussed the changes.

Public Comment opened at 9:50 am - Brian Kelly felt the number of responses from the survey was not enough to rely on for valid results. He noted there was the possibility it could have been completed more than once by the same individual. (His written comments were submitted to be added to the packet)

Feringa suggested copies of public comments on this draft plan to be given to the board to review.

Motion by Timmins to approve the Draft Parks & Recreation Plan 2019-2023 with changes incorporated, to be sent to the Township Board to hold a public hearing at their January 8, 2019 meeting, seconded by Wentzloff. Motion carries.

2. Trail Updates

- a. **TVC 2 CHX (memo enclosed)**
- b. **Acme Connector Trail-** Kushman informed there is availability on January 22, 23 & 24, to hold at least two meetings for an adjacent property owner's outreach with the consultants, Networks Northwest, and TART Trails to go through the proposed routes between Acme and Elk Rapids. All the engineering, public feedback, and Stakeholders comments have been compiled for the meeting. They will be going back to adjacent land owners to have them voiced their concerns. There are 600 mailings going out right after the holidays to land owners, to notify them and get an assessment. The larger trail project north of Elk Rapids will begin the selection of a consultant by using an alternate method, more of an interview process rather than sending out bids. This will be for the engineering between Acme and Elk Rapids and to move the preliminary design to final. The timeline is to have a consultant hired and onboard by March.
 - i. **Engineering Bid Review and Recommendation**
Winter informed five bids have been submitted for the Acme connector trail engineering. The committee needs to review the bids and give a recommendation to the township board. Feringa created a reviewer cost sheet showing a breakdown on pricing from each company and his ranking for consideration.

Both Winter and Kushman felt Beckett & Raeder would be a good company to use because of their planning experience and familiarity with Acme.

The census was to go with Beckett & Raeder with OHM Advisors as an alternative. Their costs were both within the budget and they have the experience that is needed.

Motion by Wentzloff to recommend Beckett & Raeder with the alternative of OHM Advisors for the RFP engineering on the connector trail, seconded by Timmins. Motion carries.

Kushman informed Holiday Inn returned the signed license agreement for the trail.

3. Bayside Park

- a. **Bench Adoption Update-**Winter informed final two benches have been adopted, one was by CCat and it will have two plaques, one for Ron Harding and the other for Bob Carstens. They will be installed in the spring.
- b. **Garden Adoption Option-**Winter said there will be a garden in the park with a plaque for Eric Takayama. It was adopted by CCat and the board approved to move ahead with the plants.
- c. **Swing Adoption Prices and Color Options-** Winter spoke with Miracle Midwest the company who has the Wabash Valley Swing that Linda Kaleita had seen and recommended. They sent quotes for one swing and two. The pricing gave the choice of either a 4' or 6' bench, with the option of using square or round posts. The committee was interested in two 6' benches using the colors of grey posts with dark brown seats.

Heffner mentioned there is a park in Glen Arbor that was nicely done and has swings. He would like to postpone the decision until next month's meeting to make a trip to view their playground equipment. He will also contact the park to get the name of the company they ordered the swings from.

- d. **Playground Color Options-** Jean Aukerman showed color samples of playground equipment and provided a recap of the Gosling-Czubak recommendation list consisting of selected firms and color themes. The committee discussed the different combinations with the colors of dune and acorn as their first choices. The main piece of equipment the Eclipse Climber arch, was offered by the selling company in the color of limon (green shade) at a discount. The committee discussed going with the limon piece, a black net and the connectors in carbon grey. Heffner felt limon was not the right color to use and they should stay with neutrals. The committee decided the core piece in limon was not the choice color but saved the township money and it would work for the park.

Motion by Timmins to recommend to the board the discounted limon for the net climber with carbon for the connectors, a black net and using dune and acorn for the future color palette, seconded by Wentzloff. Motion carried by four (Timmins, Wentzloff, Feringa, Heflin), with one nay by Heffner.

4. **Park System Signage:** No report
5. **Art In The Park:** No report
6. **Bayside Park Dedication Ceremony:** Winter informed a special committee has been formed to help plan the event. A date has been set for Saturday, May 18, 2019 from noon to 4 pm. He is researching costs for a tent to have announcements, a PA system, and porta john rentals. He will give the board the costs for approval. Feringa will contact GTR to see if they will assist in shuttling people back and forth from an alternate parking location near the park.

G. NEW BUSINESS:

1. **Approve 2019 Meeting Calendar**

Motion by Wentzloff to approve 2019 Meeting Calendar as present, seconded by Timmins. Motion carries.

H. PUBLIC COMMENT: None

ADJOURN: Motion by Timmins to adjourn, seconded by Wentzloff. Motion carries, meeting adjourned at 10:41 am

Art in the Parks Project outline

The mission of the Art in the Park project is to enrich the community by integrating a wide range of art into Acme Township park spaces, with the recognition that art in a public setting is vital to creating an active, vibrant destination for the residents and visitors to our community.

Project Goals.

- Connect Acme Township residents and visitors to art within the public parks and trails spaces.
- Provide opportunities for Acme Township residents and visitors to have an in-person interaction with art.
- Foster conversation among residents and visitors to our parks and trails spaces.
- Create a sense of whimsy, curiosity, and delight in our parks and trails.
- Define and enhance our parks and trails spaces and our community.

Guidelines for proposed parks and trails artworks

- Artwork should have relevance to the communities values, culture, and people.
- Artworks should be physically suitable for outdoor display, including its maintenance and conservation requirements.
- The artworks should serve to activate and enhance the space.
- Scale of any artworks should be appropriate to the space and not detract from the natural beauty of the landscape
- Artworks should not damage in any way the surrounding environment or landscape.

Possible options for Art in the Park

- Temporary artworks in a regular and ongoing rotation
- Permanent commissioned artworks
- Community based artworks (overseen by a commissioned artist who has demonstrated professional ability)
- Interactive, structural artworks that are part of a larger parks and trails development plan (gardens, climbable structures, landscape based art, etc)

Possible first steps

- Start a dialogue with other community members, organizations, or committees who have successfully implemented similar projects in order to gain further insights for getting started.
- Identify types of near-term projects that quickly achieve the goals of the project, and also identify types of possible long-term projects that may need to be cultivated over a longer time period
- Inquire as to possible grants or donations that may apply to the project.
- Form a sub committee to jury future proposals and make recommendations to the township board regarding artworks, artists, locations, etc.

Shawn Winter

From: Jim Heffner <jhefgan@yahoo.com>
Sent: Friday, February 15, 2019 8:02 AM
To: Shawn Winter
Cc: JEAN AUKERMAN
Subject: Sway Benches

Shawn,

The following are photos of Sway Benches from GameTime that are installed at the Glen Arbor Township Park. Also, the following is a link to methods for funding playground equipment (<https://www.gametime.com/search-results?keywords=Funding&channel=news>).

Jim







GameTime c/o Sinclair Recreation
PO Box 1409
Holland, MI 49422-1409
Ph: 800-444-4954
Fax: 616-392-8634

QUOTE
#73860

02/11/2019

North Bayside Park - Sway Benches

ACME TOWNSHIP HALL
 Attn: Jim Heffner
 6042 ACME RD
 WILLIAMSBURG, MI 49690-9445
 jhefgan@yahoo.com

Project #: P59340
 Ship To Zip: 49690

Quantity	Part #	Description	Unit Price	Amount
2	28028	Game Time - Sway Bench	\$1,503.00	\$3,006.00

Price includes supply and freight cost only. Does not include unloading, storage, or installation of equipment.

SubTotal: \$3,006.00
 Discount: (\$150.30)
 Freight: \$1,154.95
Total Amount: \$4,010.65

THIS QUOTATION IS SUBJECT TO POLICES IN THE CURRENT GAMETIME PARK AND PLAYGROUND CATALOG AND THE FOLLOWING TERMS AND CONDITIONS. OUR QUOTATION IS BASED ON SHIPMENT OF ALL ITEMS AT ONE TIME TO A SINGLE DESTINATION, UNLESS NOTED, AND CHANGES ARE SUBJECT TO PRICE ADJUSTMENT. PURCHASES IN EXCESS OF \$1,000.00 TO BE SUPPORTED BY YOUR WRITTEN PURCHASE ORDER MADE OUT TO GAMETIME, C/O SINCLAIR RECREATION.

NOTE: PRICING DOES NOT INCLUDE ANY DAVIS BACON OR PREVAILING WAGE RATES UNLESS SPECIFICALLY IDENTIFIED ABOVE IN QUOTE.

Pricing: f.o.b. factory, firm for 30 days from date of quotation unless otherwise noted on quotation. Sales Tax will be added at time of invoicing unless a tax exempt certificate is provided at the time of order entry.

Payment terms: Net 30 days for tax supported governmental agencies. A 1.5% per month finance charge will be imposed on all past due accounts. Equipment shall be invoiced separately from other services and shall be payable in advance of those services and project completion. Retainage not accepted.

Payment terms: By credit card, VISA or MasterCard.

Card Type: _____

Card Number: _____

Expiration Date: ____/____/____

Security Code: _____

Name on Card: _____

Billing Zip: _____

Authorized Cardholder Signature: _____

Shipment: Order shall ship within 30-45 days after GameTime's receipt and acceptance of your purchase order, color selections, approved submittals, and receipt of deposit, if required.

Exclusions: Unless specifically included, this quotation excludes all site work and landscaping; removal of existing equipment; acceptance of equipment and off-loading; storage of goods prior to installation; equipment assembly and installation; safety surfacing; borders and drainage provisions.



GameTime c/o Sinclair Recreation
PO Box 1409
Holland, MI 49422-1409
Ph: 800-444-4954
Fax: 616-392-8634

QUOTE
#73860

02/11/2019

North Bayside Park - Sway Benches

Acceptance of quotation:

Accepted By (printed): _____

P.O. No: _____

Signature: _____

Please make P.O.s out to GameTime C/O Sinclair Recreation

Title: _____

Date: _____

Facsimile: _____

Phone _____

Email: _____

Purchase Amount: **\$4,010.65**

REQUIRED ORDER INFORMATION:

Bill To: _____

Ship To: _____

Contact: _____

Contact: _____

Address: _____

Address: _____

Address: _____

Address: _____

City, State, Zip: _____

City, State, Zip: _____

Tel: _____
(For Accounts Payable)

Tel: _____
(To call before delivery)

Email: _____

Email: _____

COLOR SELECTIONS: _____

SALES TAX EXEMPTION CERTIFICATE #: _____ (PLEASE PROVIDE A COPY OF CERTIFICATE)

NOTE: PRICING DOES NOT INCLUDE ANY DAVIS BACON OR PREVAILING WAGE RATES UNLESS SPECIFICALLY IDENTIFIED ABOVE IN QUOTE. IF INSTALLATION IS BEING QUOTED, THERE WILL BE A BACKCHARGE FOR THE INSTALLATION TO BE DONE THROUGH FELT, PEASTONE, SURFACING, OR WOODCHIPS. PRICING VALID FOR 30 DAYS FROM THE DATE OF QUOTATION UNLESS OTHERWISE NOTED.





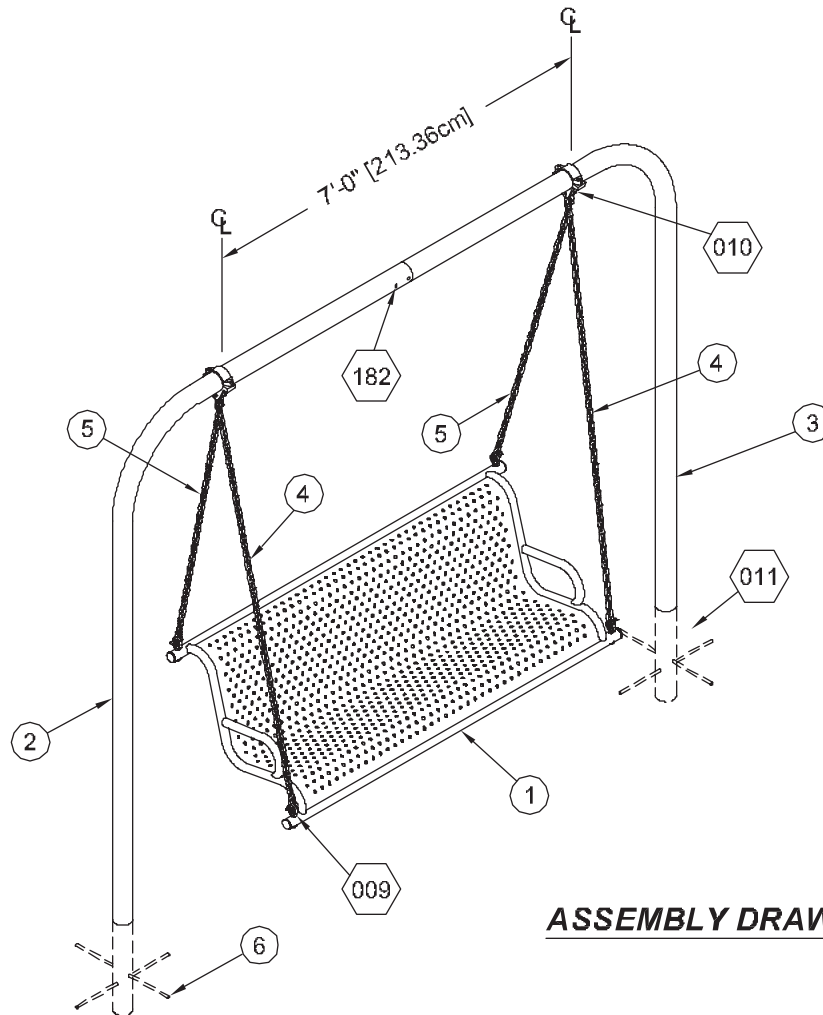
Enriching Childhood Through Play.

1-800-235-2440

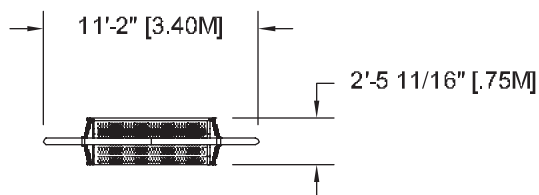
28028 SWAY BENCH

ISSUED/REVISED: 10/22/07

-  = INSTALLATION
= DETAIL
-  = PARTS LIST
= REFERENCE



ASSEMBLY DRAWING



TOP VIEW

SPECIFICATIONS

UPRIGHT: Shall be 3.5" outside diameter, 13 gauge (.095") galvanized round tubing, manufactured to ASTM A-500 Section II tolerances from cold-formed steel conforming to ASTM A-569 Sheet Spec. for Steel Coil. Minimum yield strength shall be 50,000 psi and minimum tensile strength shall be 55,000 psi. Upright shall be coated with a custom formula TGIC polyester powder coating in conformance with the specifications outlined herein.

SWAY BENCH: Bench shall be fabricated from 12 gauge (.109" thick) punched steel with a protective P & O finish. Arm rest and side frame shall be 1-1/2" O.D., 16 gauge (.065") wall galvanized tubing. Swing support shall be 1-1/2" O.D., 11 gauge (.120") wall galvanized pipe. Bench shall be a one-piece welded assembly and shall be coated with a custom formula TGIC polyester powder coating in conformance with the specifications outlined herein.

HARDWARE: All nuts, bolts, screws, inserts, and lockwashers used in the assembly of all play equipment shall be stainless steel, yellow dichromate plated steel, blue-coat plated steel, mechanically galvanized or powder coated/yellow dichromate plated steel. All primary fasteners shall be 300 series stainless steel. Fasteners with yellow dichromate treatment have an electro deposited, 99.9% pure zinc substrate applied from a specially formulated solution sealed with a yellow dichromate top coat designed to work in conjunction with the zinc plating. Yellow dichromate has a 320% longer life to white corrosion and 275% longer to red corrosion than does hot-dip galvanizing.

NOTE: All weights are based on average comparisons of each part.

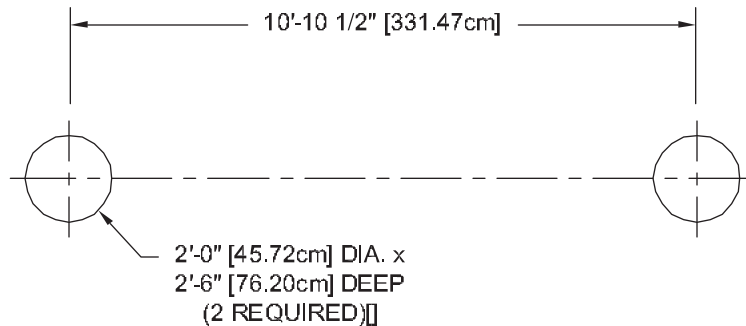
SPECIFICATIONS: GAMETIME has a policy of continuous improvement and reserves the right to discontinue or change specifications without notice.



IMPORTANT PRODUCT INFORMATION AND SAFETY WARNINGS



- ALWAYS FOLLOW INSTALLATION INSTRUCTIONS WHEN ERECTING EQUIPMENT.
- Worn surfaces around equipment should be restored. Concrete footings should never be exposed. Surface depth should comply with installation instructions.
- Equipment should be placed to eliminate conflicting traffic patterns.
- All protruding nuts and bolts should be covered; sharp edges on pipes should be capped or removed. Check for bent, broken or severely worn pipe and replace.
- Test overall stability and rigidity of all play equipment. Check for proper assembly, installation and ground anchoring.
- Check for and repair damage caused by wear or vandalism, a major factor in injury-causing situations.
- Check to be sure all fittings are tight and that the bars and pipes do not move.
- GAMETIME® PROVIDES ITS CUSTOMERS WITH COMPLETE INSTALLATION SHEETS AND INSTALLATION INSTRUCTIONS. THE INSTALLATION SHEET CONTAINS THE LISTING OF EVERY PART USED IN A PIECE OF EQUIPMENT AND SHOULD BE KEPT IN THE CUSTOMER'S FILES FOR ACCURATE REFERENCE WHEN REPLACEMENT PARTS ARE NEEDED.
- Never add components not intended for use with this product.
- Regular maintenance is necessary on this and all park and recreational equipment to ensure the safety of the user.
- Proper maintenance of GAMETIME® equipment requires regular tightening of all bolts, nuts, and set screws.



CONCRETE REQUIRED:
.35 Cubic Yards
[.29 Cubic Meters]

GROUND PLAN

NOTE: Hole depths indicated on all ground plans are measured from the Finished Surface. See Detail 011. All footing dimensions are based on level finished surface.

INSTALLATION INSTRUCTIONS

NOTE: THIS INSTALLATION BOOKLET SHOULD BE KEPT IN CUSTOMER'S FILE FOR FUTURE REFERENCE.

NOTE: Do not overtighten bolts. To overtighten may cause buckling or dimpling of some parts.

NOTE: Read installation instructions thoroughly before starting assembly. Pour concrete only after final assembly is complete. Bracing material may be required during assembly.

NOTE: Do not tighten any nuts, bolts, rods, etc. until the unit is completely assembled.

STEP 1: Dig required holes (2'-6" [76.20cm] deep x 1'-6" [30.48cm] diameter). Place a brick or equivalent at the bottom of each hole to provide a solid foundation for each upright. See Detail 011.

STEP 2: Bolt swing hangers onto uprights, insert anchor rods, and attach chain as desired. (Note: Long chain goes to front of swing).

STEP 3: Place swing uprights into holes. Connect Uprights at swage with bolts, washers, and nuts (see Detail 182). Check to make sure that the uprights are the correct distance apart, the swing hangers are level in relation to each other, and that the uprights are vertically plumb.

STEP 4: Pour concrete to within 0'-4" [10.01cm] of Finished Surface, and fill remaining with backfill. See Detail 011.

STEP 5: After concrete has set for 48 hours, hang bench on chains.

NOTE: Due to extremes in weather and soil conditions, hole sizes may have to be increased to meet local conditions.

PARTS LIST

REF NO.	DESCRIPTION	NO. REQ'D.	PART NO.
1	Sway Bench	1	160928
2	Upright	1	168987
3	Upright w/ Swage	1	169553
	Hardware Complete	1	162858
4	Chain (80" Long)	2	163136*
5	Chain (60" Long)	2	103049*
6	Anchor Rod	4	156063*
	3/8" Shackle w/ Bolt-Pin	4	125461*
	3 1/2" Swing Hanger	2	1462*
	1/2" x 4" Hex Head Bolt	2	801215*
	1/2" Flatwasher	2	817412*
	1/2" Lockwasher	2	817342*
	1/2" Hex Nut	2	804055*
	Top Clevis	2	157002**
	Bottom Clevis	2	157012**
	Swing Pendulum	2	157010**
	1/2" x 2 1/2" Hex Bolt	2	801200**
	1/2" Lockwasher	2	817342**
	1/2" Hex Nut	2	804055**
	3/8" x 2" Carriage Bolt	4	800256**
	3/8" x 1" Shoulder Bolt	2	811226**
	3/8" Lockwasher	4	817334**
	3/8" Hex Nut	4	804053**

Unless Otherwise Specified, All Units of Measure are Each

** Included in Hardware*

*** Included in 1462 Swing Hanger Package*

Warning: During Installation, Hardware And Small Parts Are Choking Hazards For Young Children. Store Unused Parts Appropriately Until Assembly Is Completed. Once Assembly Is Completed, Remove Any Unused Parts From The Play Environment And Dispose/Save Them In A Secure Location.

DETAILS -for- 28028

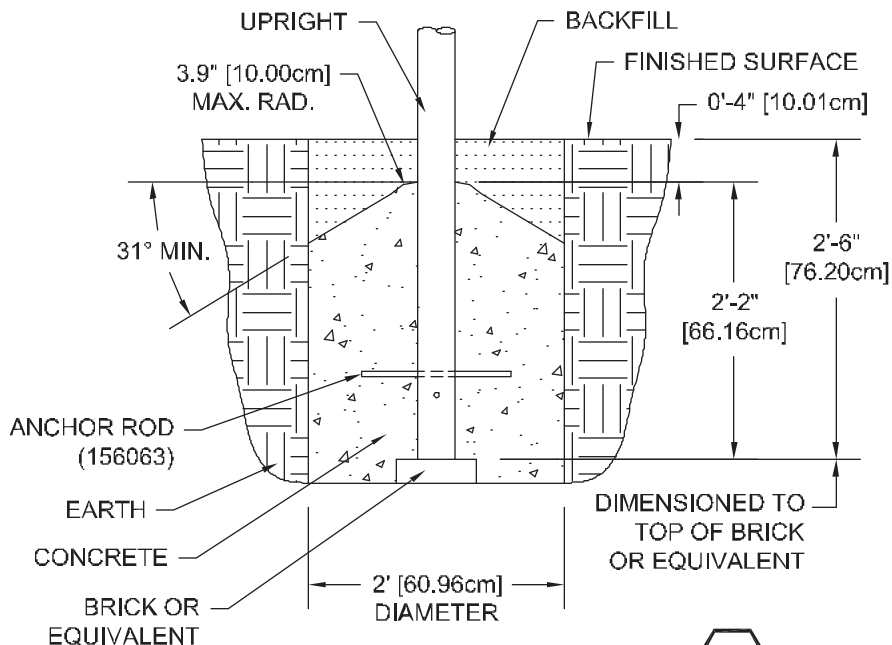
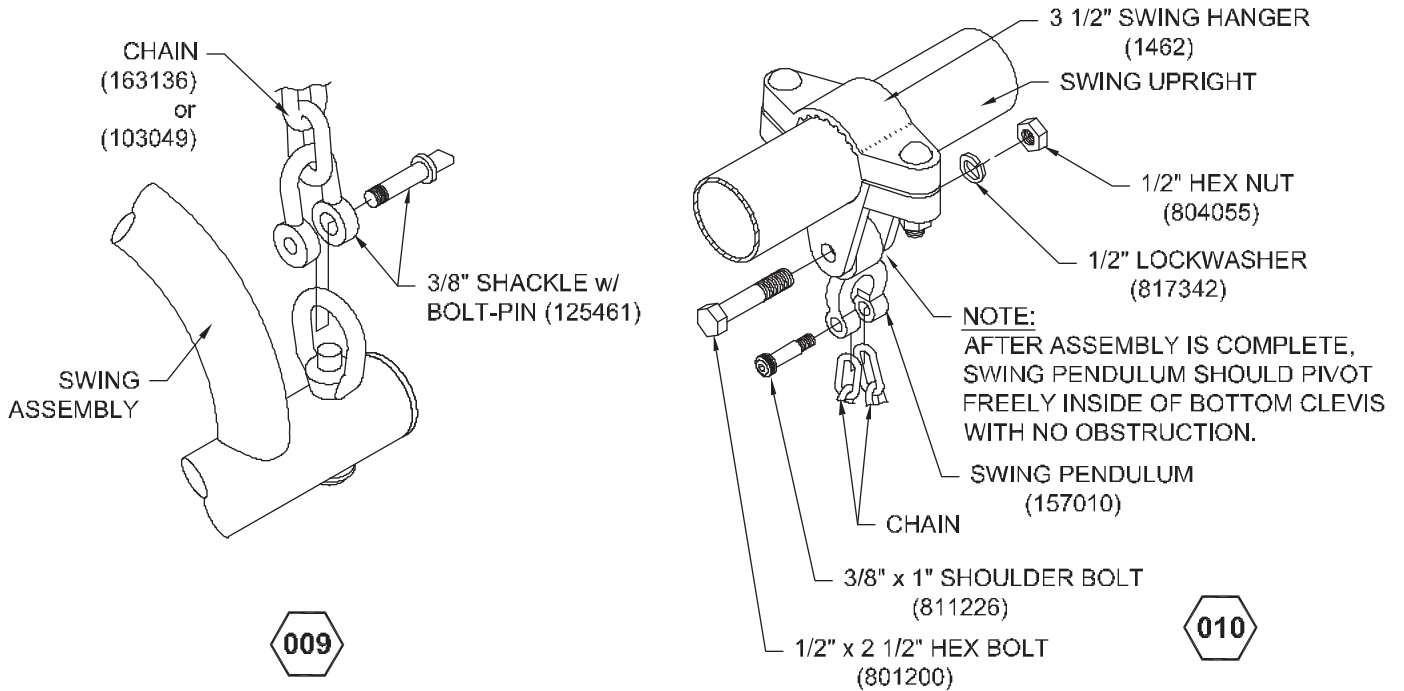
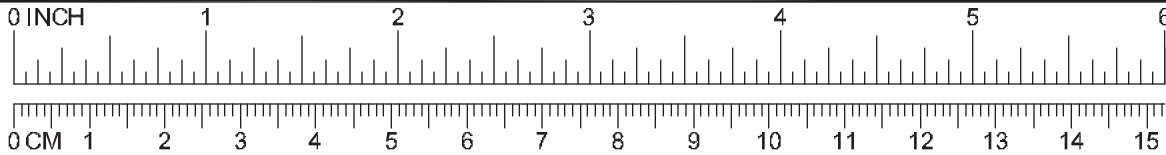
IMPORTANT

To REDUCE THE RISK OF CLOTHING ENTANGLEMENT IN COMPLIANCE WITH ASTM F1487, ANY BOLT END PROTRUDING MORE THAN TWO FULL THREADS BEYOND THE FACE OF THE NUT SHALL BE CUT-OFF FLUSH, FILED

SMOOTH AND TREATED TO PREVENT CORROSION.

NOTE: LOCTITE (SUPPLIED BY OTHERS) SHOULD BE USED ON ALL THREADED HARDWARE.

NOTE: AFTER ASSEMBLY IS COMPLETE, PEEN TEE-NUTS AND FLATWASHERS TO MATCH RADIUS OF PIPE.



NOTES:
 -SLOPED FOOTING IS A REQUIREMENT OF EUROPEAN STANDARD EN1176-1
 -SUGGESTED MINIMUM CONCRETE RATING: 3000 PSI

DETAILS -for- 28028

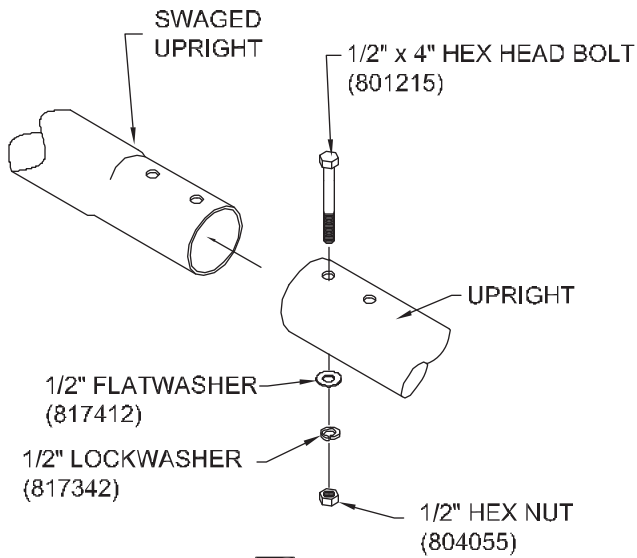
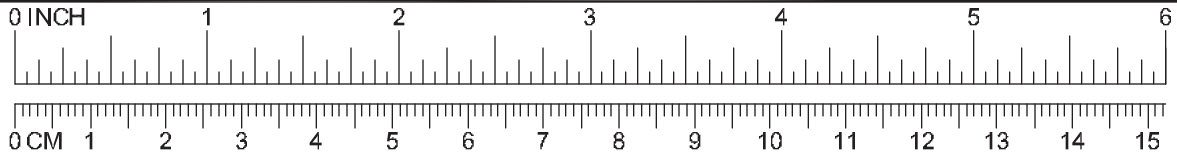
IMPORTANT

To REDUCE THE RISK OF CLOTHING ENTANGLEMENT IN COMPLIANCE WITH ASTM F1487, ANY BOLT END PROTRUDING MORE THAN TWO FULL THREADS BEYOND THE FACE OF THE NUT SHALL BE CUT-OFF FLUSH, FILED

SMOOTH AND TREATED TO PREVENT CORROSION.

NOTE: LOCTITE (SUPPLIED BY OTHERS) SHOULD BE USED ON ALL THREADED HARDWARE.

NOTE: AFTER ASSEMBLY IS COMPLETE, PEEN TEE-NUTS AND FLATWASHERS TO MATCH RADIUS OF PIPE.



182

GJ's Tent Rental

- 20' x 30' tent \$255 (township discount \$235)
- 20' x 40' tent \$340
- 30' x 30' tent \$525
- Delivery fee of \$50
- Can set up that morning, tear down that afternoon
- Prefer plain white
- Sides are available as well (may have issues with fire department)

Sound Environments

- Portable system available for \$75 per day
- Runs off battery (up to 2 hours)
- Good for a crowd of up to 500 people
- One speaker, speaker stand, handheld microphone, microphone stand
- Built in CD player for ambient sound, if desired. Can plug in ipods, etc.
- Pick up on Friday, drop off on Monday (still only charged for one day)

Gmoser's Septic Service

- Regular units \$85 each
- ADA units \$150 each
- Need contact person and phone number
- Will meet contact on site Friday to ensure proper placement
- Can change number of units up until Thursday